

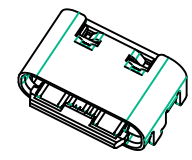
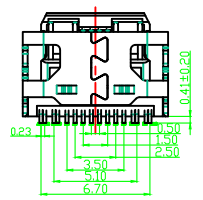
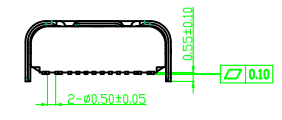
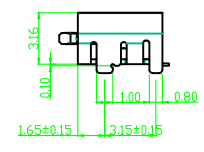
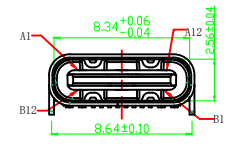
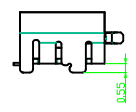
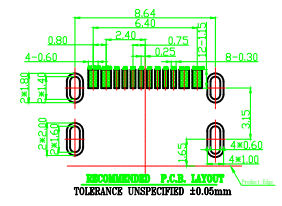
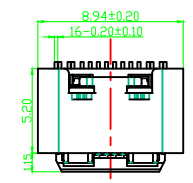
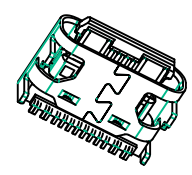


REV.	ECN. NO.	DESCRIPTION	ENG	DATE
A				

NOTES:

SPECIFICATION:

1. CURRENT RATING: 5.0A MAX
2. VOLTAGE: 100 VAC
3. TEMPERATURE RANGE: -30 °C ~ 85 °C
4. CONTACT RESISTANCE: 40 MILLIONHM MAX
5. INSULATION RESISTANCE: 100 MEGOHMS MIN.
6. LNSERTION FORCE : 5N~20N
7. UNMATING FORCE: 8N~20N
8. DURABILITY: 10,000 CYCLES



A1	GND	B12	GND
A4	VBUS	B9	VBUS
A5	CC1	B8	SBU2
A6	DP1	B7	DN2
A7	DN1	B6	DP2
A8	SBU1	B5	CC2
A9	VBUS	B4	VBUS
A12	GND	B1	GND
PIN	SIGNAL NAME	PIN	SIGNAL NAME

6	SHELL	STAINLESS STEEL	Ni Plated	IPCS
5	SHIELDING PLATE	STAINLESS STEEL	---	IPCS
4	MD	HIGH TEMPERATURE PLASTIC	BLACK	IPCS
3	CONTACT	COPPER ALLOY	Au/Ni Plated	ISBT
2	CONTACT	COPPER ALLOY	Au/Ni Plated	ISBT
1	HOUSING	HIGH TEMPERATURE PLASTIC	BLACK	IPCS
NO.	DESCRIPTION	MATERIAL	REMARKS	QTY

DESIGN	MISS ZENG	SC ALL			未注公差 TOLERANCE		品名: 连接器
DRAWIGN	MISS LI	ANIT	MM		X. ±0.50	X°. ±2°	
CHECK	Mr. ZENG	SIZE	A4: 210*297	.XX ±0.20	.XX° ±0.5°		
APPROVAL		VERSION	01	.XXX ±0.10			

品名: 连接器  
型号: C F 单排16P有柱四脚插板5.20板上型

